

SEPTEMBER 11—13, 2015



Camp Tuck-A-Basket



Land of Lincoln
Basketweavers



Camp Tuck-a-Basket 2015

Community Activity Center, Normal, Illinois

Schedule of Events

| <u>Friday, September 11th</u> | <u>Saturday, September 12th</u> | <u>Sunday, September 13th</u> |
|--|--|--|
| 3:30 pm Vendor set-up | 7:00am Vendor set-up | 8:00 am Registration |
| 4:30 pm Registration | 8:00 am Registration | 8:30 am Classes begin |
| 5:30 pm - 9:30 pm Classes | 8:30 am Classes begin | Noon Lunch |
| A light supper will be available. | Noon Lunch | 1:00 - 3:30 pm Classes |
| | 12:30 pm LLBWA Meeting | |
| | 1:00 - 5:30 pm Classes | |
| | 1:00 pm Raffle ends | |
| Vending: 5:30 pm—9:30 pm | Vending: 8:00 am—6:00 pm | Vending: 8:00 am—1:00 pm |

Registration Information

We have six outstanding teachers offering classes on Friday evening and all day Saturday and Sunday. There is something for everyone and for all weaving levels.

Before you register, please read the class descriptions carefully and pay attention to suggested weaving levels, special tools required, and basket size when making your selections. Classes range from four to eight hours.

Your registration form and class selections must be received by June 1st to be considered as a first day registration. Many classes will fill on the first day, so don't delay. Please read and carefully follow all

instructions on the registration form.

You must be a LLBWA member to register. If you are not currently a member, it's not too late to join. Simply add the \$15 for membership dues to your registration fees.

Registration fees remain the same this year! Registration is \$10 for Friday evening, \$40 for Saturday, \$30 for Sunday, or \$65 for the entire weekend.

Meals are not included in the registration fee. Meals will be available at the facility Friday evening as well as Saturday and Sunday afternoon, but must be pre-ordered and pre-paid. Meal information will be forthcoming

with your class assignment confirmation packet. You will receive your class assignment confirmation packet sometime after June 7th. The fees for your classes, meals, and additional kit orders must be returned by August 1st.

There will be no cancellations or refunds allowed after August 1st. If you must cancel after this date, you will need to have someone pick up your kit(s) from the teacher(s) at Camp Tuck.

Questions? Visit our website at www.llbwa.com or contact our Camp Tuck Coordinator:

Bev Spencer
309.268.0548
brspencer01@hotmail.com



Attention Shoppers!

As always, those attending Camp Tuck will have the opportunity to shop at a variety of basket vendors.

This year's lineup includes Basket Bees, East Troy Basketry and a new vendor, Linda Chmelar from the Basket Weaving Shop in Iowa.

We also are looking for additional vendors. An application is included in this newsletter.

Hotel Information

We have reserved a block of rooms at the following hotel:

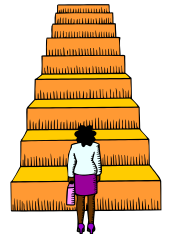
Bloomington Courtyard
310A Greenbriar Drive
Normal, IL 61761
Hotel front desk: 309-862-1166

Located about 2 miles from the Community Activity Center, this hotel is just east of Veterans Parkway. It is within walking distance of Courtyard Bistro, Sonic, Subway (inside WalMart), Fazzolis, and Panera Bread. Some of the amenities available are: an exercise room, free high speed internet, free local calls, and an indoor pool. We have reserved 20 double rooms and 15 kings at the rate of \$99.00 plus tax, excluding breakfast. With breakfast, the rate is \$109.00.

Other nearby hotels:

| | |
|------------------------------|--------------|
| Candlewood Suites | 309-862-4100 |
| Hampton Inn & Suites | 309-452-8900 |
| Holiday Inn Express & Suites | 309-862-1600 |

Weaving Levels



Beginner:

Student has little or no weaving experience with materials or technique used.

Intermediate:

Skilled in basic techniques and materials used. Weaver has no trouble setting up bases, twining, over/under weaves and rims using the material of the class offered.

Advanced:

Mastered all basic and intermediate skills for materials and techniques used. This class is more challenging.

All Levels:

Classes offered to all student skill levels from Beginner to Advanced.

Directions to Community Activity Center

From I-55 Southbound: Take Veterans Parkway Exit 167. Turn left at the stop sign at the end of the ramp. Get in the far right lane and take the Shelbourne/Normal exit on the right. Turn right at the stop sign at the end of the ramp. Continue on Shelbourne to Beech Street. Turn left onto Beech St and go two blocks. Turn left on Lincoln and then turn left on Cole Street. The parking lot is on the right and the Community Activity Center is on the left.



From I-74 Eastbound: Take Exit 127 toward Chicago and then merge onto I-55 North. Take the N Main St/US 51 S Business Exit 165A toward Bloomington-Normal. Take a left on Raab Road then a right on Linden St. Take a left at Shelbourne Drive then turn right on to Beech St. Turn left on Lincoln St. then left on Cole St. The parking lot is on the right and the Community Activity Center is on the left.

From I-74 Westbound: Take I-55 N/US 51 N. Take the N Main St/US 51 S Business Exit 165A toward Bloomington-Normal. Take a left on Raab Road then a right on Linden St. Take a left at Shelbourne Drive then turn right on to Beech St. Turn left on Lincoln St. then left on Cole St. The parking lot is on the right and the Community Activity Center is on the left.

From I-39 Southbound: Merge onto I-55 N via exit left toward Chicago. Take the N Main St/US 51 S Business Exit 165A toward Bloomington-Normal. Take a left on Raab Road then a right on Linden St. Take a left at Shelbourne Drive then turn right on to Beech St. Turn left on Lincoln St. then left on Cole St. The parking lot is on the right and the Community Activity Center is on the left.

From US 51 Northbound: Merge onto US 51 N toward Peoria/Rockford and stay straight on I-55 N. Take the N Main St/US 51 S Business Exit 165A toward Bloomington-Normal. Take a left on Raab Road then a right on Linden St. Take a left at Shelbourne Drive then turn right on to Beech St. Turn left on Lincoln St. then left on Cole St. The parking lot is on the right and the Community Activity Center is on the left.

Please Note: There are limited handicapped parking spaces in front of the Activity Center.

Friday Evening Classes

Papyrus—Paper Business Basket

Instructor: Annetta Kraayeveld

Class Length: Friday night—3 hours

Weaving Level: Intermediate Level

Class Fee: \$35

Description: This beautiful little basket is a wonderful introduction to weaving with painted paper. It is woven on a mold with start stop rows so shaping is a snap. A layered rim is lashed with waxed linen, and a simple embellishment completes the basket. Teacher will provide a wide choice of paper (painted and precut) as well as button and shell embellishments. Teacher will also demonstrate how to make a simple paper embellishment. Students will make two baskets.

Special Tools: Students should bring sharp scissors, small bent packer and a #22 tapestry needle.

Dimensions: Width: 2 ¾" Length: 4 ½" Height: 1 ¾"



Card Caddy

Instructor: Kathy Tessler

All tools provided by instructor

Class Length: Friday night—4 hours

Weaving Level: Intermediate Level

Class Fee: \$26

Description: Weave an ash pouch over a mold you keep. The card caddy features your choice of ash, cane, and leather weavers with bead accent. Perfect for keeping track of your room key and credit card.

Dimensions: Width: ¼" Length: 3" Height: 3 ½"



Mini Cedar

Instructor: Polly Adams Sutton

Class Length: Friday night—4 hours

Weaving Level: All Levels

Class Fee: \$55

Description: Create X's on every cedar spoke, as the ash remains on the inside of this mini basket. The finish is a folded border.

Dimensions: Width: 1 ¾" Length: 1 ¾" Height: 1 ½"



Friday Evening Classes

Pine Needle Platter

Instructor: Sally Durkee

Class Length: Friday night—4 hours

Weaving Level: All Levels

Class Fee: \$28

Description: You will learn to coil pine needles around a pottery base with many designs to choose from. Split wheat stitch is taught using artificial sinew. Great for the beginner.

Dimensions: Width: 4 ½" Length: 6"



Kaleidoscope Large or Small

Instructor: Trista Rothgerber

Class Length: Friday night—4 hours

Weaving Level: All Levels

Class Fee: Large: \$39 Small: \$27



Description: These Kaleidoscopes are a fun, easy project to weave. The large scope contains a rotating end piece filled with faux jewels and pearls floating in liquid for a stunning effect. The small scope contains a clear lens that turns everything it is pointed towards into a kaleidoscope image. A variety of color choices and weaving patterns will be available to choose from. Learn how to create a variety of appearances by changing the quantity of spokes, varying a twill pattern or choosing to use a continuous or chase weave.

Dimensions: Large: Diameter: 2" Length: 9" **Small:** Diameter: 1 ½" Length: 7"

Chains and Arrows Basket

Instructor: Dianne Gleixner

Class Length: Friday night—4 hours

Weaving Level: Intermediate Level

Class Fee: \$50

Description: Students will insert spokes into a rectangular, slotted wood base, twine, weave start/stop rows, and learn triple twined arrows. Swing handles will be inserted just before rimming. Some color choices will be available at class time.

Dimensions: Width: 7" Length: 12" Height: 5"



Saturday Classes

Sakura

Instructor: Annetta Kraayeveld

Class Length: Saturday—8 hours

Weaving Level: Intermediate/Advanced Levels

Class Fee: \$ 45

Description: 'Sakura' means 'cherry blossom'. Cherry is the focus of this basket; cherry base, delicate cherry spokes and cherry to accent the rim. Carefully placed copper overlays add a subtle glint to your basket, seed beads and a few gemstone beads add a touch of finesse to the finished basket. Students will focus seriously on shaping a small basket using a gentle touch, the delicate cherry spokes in this basket make it a challenge to weave.

Special Tools: In addition to your regular tools, please bring a small packer, sharp diagonal cutters and small alligator clips. Students may also want to bring a beading light for the last step (beading).

Dimensions: Diameter: 3 ¾" Height: 5 ½"



Itsy Bitsy Birdhouse

All tools provided by instructor

Instructor: Kathy Tessler

Class Length: Saturday—8 hours

Weaving Level: Intermediate Level

Class Fee: \$40

Description: Weave a little birdhouse over a class mold. Emphasis on ash weaving techniques. Roof is woven as a flat mat and attached to house.

Dimensions: Width: 2 ½" Length: 2 ½" Height: 3 ½"



Cedar in Color

Instructor: Polly Adams Sutton

Class Length: Saturday—8 hours

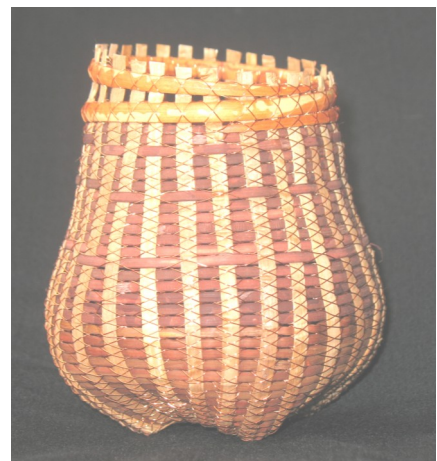
Weaving Level: Advanced Level

Class Fee: \$78

Description: Using wire and dyed cane over cedar bark spokes, this basket will be twined in an X technique. A 2nd X technique will be used to create a color accent. The finish is an easy asymmetrical border of tortoise shell cane.

Special Tools: squirt bottle, packing tool, old towel

Dimensions: Width: 3 ½" Length: 3 ½" Height: 4 ½"



Saturday Classes

Oblong Dish

Instructor: Sally Durkee

Class Length: Saturday morning—4 hours

Weaving Level: All Levels

Class Fee: \$34

Description: You will learn to coil pine needles around a pottery base with many designs to choose from. The split wheat stitch is taught using artificial sinew. Wood beads will be added as an embellishment.

Dimensions: Width: 4 1/4" Length: 10"



Pine Needle Bowl

Instructor: Sally Durkee

Class Length: Saturday afternoon—4 hours

Weaving Level: All Levels

Class Fee: \$36

Description: This wheel thrown bowl (sizes, colors and design vary greatly) is rimmed with pine needles using artificial sinew. Feathers will be added as an embellishment.

Dimensions: Diameter: 4"—5" (Sizes vary)



Checkmate

Instructor: Trista Rothgerber

Class Length: Saturday—8 hours

Weaving Level: Intermediate Level

Class Fee: \$46

Description: This is a large bushel style basket that starts with a wooden base. All weaving is done using chase weave with an emphasis on shaping. The handles start with #10 round reed, which is then wrapped using #2 round. These handles offer a nice highlight to this basket.

Dimensions: Diameter: 12" Height: 10"



Saturday Classes

Paper Strapping Tote Basket

Instructor: Dianne Gleixner

Class Length: Saturday—8 hours

Weaving Level: Intermediate Level—must have twill experience

Class Fee: \$65

Description: Weave with a material that is probably new to everyone! This strong and useful tote basket is woven from a product that is left over from the paper milling process. Students will weave a herringbone twill base, continue that same twill weave up the sides while changing the width of the weaver and the direction of the twill weave. This creates a subtle arrow design up the sides. Self handles are created at the top and the rim is lashed with waxed linen thread. Hand strength is required since a lot of cutting is involved.

Special Tools: *Sharp reed cutters and a good misting spray bottle. Also bring a blunt tip, large eyed tapestry needle and clear drying white glue.*

Dimensions: Width: 4" Length: 10" Height: 11"



Sunday Classes

River Walk

Instructor: Annetta Kraayeveld

Class Length: Sunday—6 hours

Weaving Level: Advanced Level

Class Fee: \$40



Description: This little basket has legs! Weaving with black ash, students will focus on how to control shape, while they weave legs and then transition to weaving a round basket. Basket rim is filled with sweet grass, then a simple 'from nature' embellishment is added. Class will discuss ways to add these pouch legs to other baskets.

Special Tools: *Students should bring a size #20 Tapestry and a small packing tool.*

Dimensions: Width: 3" Length: 3 ¼" Height: 1 ¾"- 2 ¾"

Sunday Classes

Sampler Tote

Instructor: Kathy Tessler

Class Length: Sunday—6 hours

Weaving Level: Intermediate Level

Class Fee: \$56

Description: Roomy tote with filled base and leather handle straps. Emphasis on shaping while weaving with varying widths of dyed and natural reed.

Dimensions: Width: 5 ½" Length: 12" Height: 12 ½"



Waves on Cedar

Instructor: Polly Adams Sutton

Class Length: Sunday—6 hours

Weaving Level: Intermediate Level

Class Fee: \$78

Description: Using cedar bark for the spokes this sculptural basket uses basic twining to undulate the cedar with the placement of the wire. The finish is an easy lashed border.

Special Tools: squirt bottle, packing tool

Dimensions: Width: 3" Length: 2 ½" Height: 5"



Beaded Bowl

Instructor: Sally Durkee

Class Length: Sunday—6 hours

Weaving Level: Intermediate Level

Class Fee: \$39

Description: A beautiful one of a kind wheel thrown pottery bowl is rimmed with pine needles and stitched with artificial sinew, adding beads while stitching. Shapes, sizes and color vary.

Dimensions: Height: 3"—4" Diameter: 5"



Sunday Classes

William B

Instructor: Trista Rothgerber

Class Length: Sunday—6 hours

Weaving Level: All Levels

Class Fee: \$38

Description: This large Williamsburg basket features a fun handle wrap. This class will have emphasis on shaping a Williamsburg basket. You will also learn how to create a Chinese Crown Knot to wrap the handle.

Dimensions: Diameter: 14" Height: 8"



Arctic Mist

Instructor: Dianne Gleixner

Class Length: Sunday—6 hours

Weaving Level: Intermediate/Advanced Levels

Class Fee: \$58

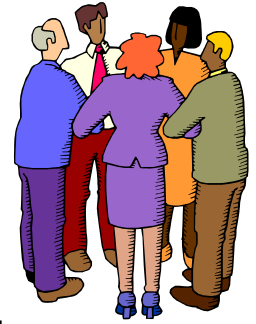
Description: Weaving over a class mold, students will insert specially dyed spokes into a slotted wood base, triple twine, and then insert a second, narrower set of spokes. The main body of the basket is woven using stacked weavers in a twill weave. Attention to detail is a must because an intentional mistake is made every row so that the twill design works out. The basket is then finished off with a cut, tucked, and lashed rim.

Special Tools: Usual Weaving Tools

Dimensions: Width: 9" Length: 13" Height: 7"



Teacher Biographies



Annetta Kraayeveld—Beloit, WI

Annetta's house has been overflowing with baskets and basket supplies since she bought 'The Basket Book' in 1994 and begged a stranger for a weaving lesson. Since then, Annetta has devoured every weaving book she can find and woven her fingers to the bone (okay, so that was a cut) - she just can't seem to stop weaving. The challenge of mastering new techniques and weaving the pictures in her mind, keep this an exciting art form for her and has earned her several awards.

In addition, Annetta has published stacks of patterns and has been teaching at basketry events and guilds across the USA since 2000. Besides baskets, she loves the people she has met and the places she has visited through basketry.

Kathy Tessler—Howell, MI

Kathy loves teaching basketry! Her goal as a teacher is to fill students' heads with as many tips and techniques as she possibly can during a class. Of course, she hopes that they leave class with a basket that they really love!

Kathy specialized in double base/double wall baskets for many years. She also designs totes that feature her leather handles.

Kathy loves weaving with ash on a Shaker cathead mold and a square mold that her husband designed. Her students have been enthusiastic about adding these treasures to their collections.

Kathy has taught at every AMB convention since 1987 as well as teaching at several other conventions and gatherings.

Polly Adams Sutton—Seattle, WA

Polly Adams Sutton is a full time studio artist, working with cedar bark from logging areas, which she gathers each spring and local NW sweetgrass. Her sculptural work is primarily twined with wire to create asymmetrical shapes and was chosen for the cover of "500 Baskets". She has been teaching basketmaking for 30 years.

Sally Durkee—West Bend, WI

Sally Durkee has been vending at conventions for 14 years with her business, golpottery.com. She has expanded her talents from making stoneware basket embellishments, handles and pine needle bases to teaching the pine needle coiling. Sally has taught and vended in Illinois, Kentucky, Tennessee, Missouri, Michigan and Wisconsin for the last ten years.

Trista Rothgerber—Santa Claus, IN

Trista took her first basket class in 1994 and has been passionate about weaving since. In 1996, she was asked to organize classes in order to help fourteen 4-H youth members with their Basketry project. Trista continued these classes for the past 18 years, helping this project grow to over 70 4-H youth in 2014. Trista spends a great deal of time creating and planning baskets from her own experiences and ideas. She hopes everyone enjoys them as much as she does.

Dianne Gleixner—Brookfield, WI

Dianne began weaving baskets in 1987 and teaching in 2004. She enjoys weaving Nantucket style baskets, twills, and anything else with a challenge and has written and published over 60 patterns. Dianne has taught in many states for their local guilds or state organization. She is honored that her baskets have won numerous awards at basket weaving conventions around the country. She also teaches basket weaving locally at her private weaving studio near her home in Brookfield, Wisconsin.



Opportunity Raffle



This year we will have an “Opportunity Raffle” to help offset the costs of Camp Tuck. Although in past years we have had a silent auction, this year we decided to do something different.

Instead of bidding on an item that you want, you will purchase raffle tickets and drop them into the containers next to the items you want. You can add one ticket or as many as you want—no limit. On Saturday at 1:00 p.m., winning names will be drawn from the containers and you will be notified if you are a winner.

In addition, we will have a 50/50 raffle where the money collected is split between the winner drawn from all participant names and LLBWA.

Jan Fries is coordinating this year’s effort. If you have something you would like to donate for the raffle, please contact Jan at 309.829.2589 or email her at jdf143@gmail.com.

You may bring your donation with you to Camp Tuck or, if you prefer, you can mail or deliver it to Jan earlier. Please include your name and the estimated value with your donation.

Jan’s address is:

Jan Fries
403 Leland St.
Bloomington, IL. 61701-5647



Volunteer Today for Camp Tuck!

Once again we will be weaving at the Community Activity Center for Camp Tuck 2015 and there are lots of opportunities to help make this year’s weaving event a success through volunteer efforts.

If you can help, please review the volunteer opportunities on the separate *Volunteer Form* included in this brochure and mark the items you would be interested in assisting with. Fill in your contact information and return the volunteer form with your registration.

We will be in touch with you about assignments as the event draws closer.

Thanks in advance for your help!

Bev Spencer
Camp Tuck Coordinator

Volunteer Form
Camp Tuck-A-Basket September 11 - 13, 2015
Community Activity Center, Normal, IL

Name: _____

Phone: _____

E-mail: _____

Friday, September 11

___ Vendor/teacher host

You will need to be available at 1:30 p.m. and will help teachers/vendors find their location at the Activity Center and assist them as needed (need at least 8 volunteers)

___ Registration desk

You will need to be available by 4 p.m. and will register weavers (need at least 2 people)

___ Dinner helper

You will need to be available by 4:30 p.m. and help distribute Friday's meal (need 2 people)

___ Cleanup crew

Help clean up areas at the end of the night

Saturday, September 12

___ Registration desk

You will need to be available by 7:45 a.m. and help register weavers (need at least 1 person)

___ Lunch helper

You will need to help distribute lunch (need at least 2 people)

___ Cleanup crew

Help clean up areas at the end of the day

Sunday, September 13

___ Lunch helper

You will need to help distribute lunch (need at least 2 people)

___ Cleanup crew

Help clean up areas at the end of the day

Miscellaneous

___ Cookie makers

Need volunteers to make 2 dozen cookies each for our meals

___ Breakfast

Need volunteers to bring something for breakfast on Saturday or Sunday

___ Drinks

*Need someone to coordinate purchase and setup of pop, water and coffee for the three-day event.
This includes getting ice for the coolers each day*

___ Silent auction

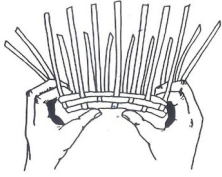
Jan Fries is coordinating this year's auction but will need help registering items and determining winning bids.

___ Other jobs as determined

Questions?

Please contact Bev Spencer at brspencer01@hotmail.com or call her at 309.268.0548





Registration Form

Camp Tuck-A-Basket September 11 - 13, 2015

Please type or print clearly

Name _____

Address _____

City, State, Zip _____

Phone () _____ Email _____

LLBWA Member ___ Yes ___ No Is this the first time you have attended Camp Tuck? ___ Yes ___ No

Registration forms received by **June 1** will be treated as first day registration. Registration forms received after **June 1** will be assigned classes subject to available space. Registrations received after **August 1** will be charged a \$10 late fee and classes will be assigned only with teacher permission. Please mail your registration as soon as possible. The registration fee does not include class material fees, which will be due upon notification of your class assignments.

In the spaces below, **indicate first, second, and third class choices for each day with a "1", "2" and "3" respectively.** Please do not list any classes you are not willing to take.

| <u>Teacher</u> | <u>Friday Class</u> | <u>Saturday Class</u> | <u>Sunday Class</u> |
|--------------------|---------------------------------|---|---------------------|
| Annetta Kraayeveld | ___ Papyrus Paper Business Card | ___ Sakura | ___ River Walk |
| Kathy Tessler | ___ Card Caddy | ___ Itsy Bitsy Birdhouse | ___ Sampler Tote |
| Polly Adams Sutton | ___ Mini Cedar | ___ Cedar in Color | ___ Waves in Cedar |
| Sally Durkee | ___ Pine Needle Platter | ___ Oblong Dish ___ Pine Needle Bowl | ___ Beaded Bowl |
| Trista Rothgerber | ___ Kaleidoscope Big or Small | ___ Checkmate | ___ William B |
| Dianne Gleixner | ___ Chains and Arrows | ___ Paper Strapping Tote Basket | ___ Arctic Mist |

Camp Tuck-A-Basket Registration Checklist

- ___ I have enclosed the registration fee made payable to LLBWA
- All 3 Days (or Saturday & Sunday)—Registration Fee = \$65 \$_____
- Or Register for Individual Days:
- Friday—Registration Fee = \$10 \$_____
- Saturday—Registration Fee = \$40 \$_____
- Sunday—Registration Fee = \$30 \$_____
- ___ If not a member of LLBWA, I have included dues of \$15 \$_____
- ___ If mailing after August 1, I have included the late fee of \$10 \$_____
- ___ I have enclosed a self-addressed, stamped envelope
- Total: \$_____

Please send this form, a check for your total fees made payable to LLBWA, and a self-addressed stamped envelope to:

Julie Williams
11 Laurel Wood Drive
Bloomington, IL 61704

Please do not send any class fees at this time. Cancellations must be submitted in writing to Julie Williams by mail or email at jmwbskts@hotmail.com

Registration form is also available
at www.llbwa.com

No refunds will be made after August 1.

I Want to Contribute!

___ I want to donate a Silent Auction item What? _____

Land of Lincoln BasketWeavers Association

Camp Tuck 2015

Vendor Information

The Land of Lincoln Basket Weavers Association Camp Tuck Convention will be held September 11th - 13th, 2015 at the Community Activity Center in Normal, Illinois.



Anyone wishing to sell in the Vendor area must be an LLBWA 2015 teacher or a current member.

Vending will also take place in the Community Activity Center. Lodging is available at nearby hotels. Contact information for lodging is enclosed.

Please note these changes for this year:

Because of limited tables, each vending space will come with only one table. If you need additional tables, you will need to supply them. You will have access to electricity but will need to bring any additional equipment necessary for your set up.

Also, please note a change in the Friday set-up time – set-up will not be available until after 3:30 p.m. Vendors may opt to vend on only Saturday and Sunday. Vending set-up time on Saturday will begin at 7:00 a.m.

Vending Fee: \$20.00 for a 10 x 10 space.
You may have multiple spaces. Just indicate the number of spaces you want.

Vendor Set-up Time: begins Friday, September 11th, 2015, after 3:30 p.m. or Saturday, September 12th at 7:00 a.m. Please notify us in advance to make arrangements if extra time will be needed for set-up.

Vending Hours:

| | |
|-----------|-----------------|
| Friday: | 5:30 pm—9:30 pm |
| Saturday: | 8:00 am—6:00 pm |
| Sunday: | 8:00 am—1:00 pm |

Meals: Are available at the facility and must be pre-paid. More details will be sent with your confirmation letter. LLBWA will be selling soft drinks, bottled water, and coffee at the facility this year, or you can bring in your own drinks.



Tax Laws: All vendors are required by law to pay Illinois 7.75% sales tax. Vendors are responsible to file and submit the tax.

Insurance: All vendors are responsible for their own insurance coverage. Neither the LLBWA nor the Community Activity Center will accept responsibility for any damage or loss incurred.

LLBWA Vendor Application Camp Tuck 2015

Name or Business Name _____

Address _____

City/State _____ Zip _____

Phone _____ E-mail _____

Names of workers (for name tags):

What types of products do you sell?

I would like to vend at Camp Tuck, enclosed is my \$20 fee for each 10' x 10' space requested

Please check if you need electricity

Number of 10' x 10' spaces requested: _____

Vender Fee \$ 20.00 per space \$ _____

Please read and sign the following:

I understand I am responsible for insurance coverage and will not hold LLBWA or the Community Activity Center responsible for any damage or loss incurred. I understand I am responsible for paying Illinois sales tax and filing the appropriate forms.

Signature _____ Date _____

Please send this form and your check made payable to LLBWA to:

Mary Ann Ford
709 Vale St.
Bloomington, IL 61701
For questions, email: maf82350@gmail.com

Land of Lincoln
Basketweavers



**Land of Lincoln
Basketweavers**



Marcia Hammerstrand
Membership Chairman
16 Fountain Lake Court
Bloomington, IL 61704

RETURN SERVICE REQUESTED

LLBWA Membership Application

| | |
|-----------------------------------|-------------------------------------|
| Date: | _____ |
| Name: | _____ |
| Address: | _____ |
| City, State, Zip: | _____ |
| Phone: | _____ |
| e-Mail Address: | _____ |
| Newsletter preference: | E-mail _____ Traditional mail _____ |
| Business Name: (if applicable) | _____ |

Note: Be sure to check your newsletter label for information about your membership. You will find the year you are paid through. If you find "2015, your membership is paid through December 31, 2015. Others may see COMP or LIFE, if they have received a complimentary copy or have been granted a life membership, respectively. The membership year runs from January 1 to December 31. Dues are \$15 per year. No partial year payments are accepted. Dues are not refundable or pro-rated. Land of Lincoln Basketweavers Association membership information is intended solely for LLBWA members and is not to be sold, rented, or reproduced in any form.

Write your check for \$15 payable to LLBWA.

Send your check and application to:

**Marcia Hammerstrand
16 Fountain Lake Court
Bloomington, IL 61704**